

ABINGTON FRIENDS' SCHOOL

Betsy D. Walker.....1103 Prospect Ave., Oak  
Lane, Phila., Pa.  
Rose L. Weintraub.....909 N. Broad St., Phila., Pa.

CLASS OF 1912

Evelyn L. Miller.....Hatboro, Pa.  
Earl H. Prentzel.....Willow Grove, Pa.

Winners in the Oratorical Contest representing Class  
D, 1912, Katharine Wood, Charles F. Kindt, Jr.

Winners in the Annual Debating Contest, Second  
Month 24, 1913, Aloysius Barili, Charles Bartlett, Jose  
Ortiz.

Winners in the Oratorical Contest for 1913, repre-  
senting Class B, Charles Bartlett, V. Ruth Weir. Indi-  
vidual winner, Elizabeth Fretz.

*School Year 1913-1914*

CIRCULAR *and*  
CATALOGUE *of*

ABINGTON  
FRIENDS' SCHOOL

*for*

RESIDENT *and*  
DAY PUPILS  
*of* BOTH SEXES

JENKINTOWN

MONTGOMERY  
COUNTY  
PA.

*Dudley C. Barrus, Ph. B.*

*Principal*

ABINGTON FRIENDS' SCHOOL

Calendar

1913

Sixth Month 18th.....Commencement  
Ninth Month 22d—Classification of new students.  
Resident students arrive  
Ninth Month 23d.....Regular exercises begin  
Twelfth Month 23d.....Winter recess begins

1914

First Month 5th.....Regular exercises resumed  
Sixth Month 17th.....Commencement  
There will be a vacation of one week in the spring.

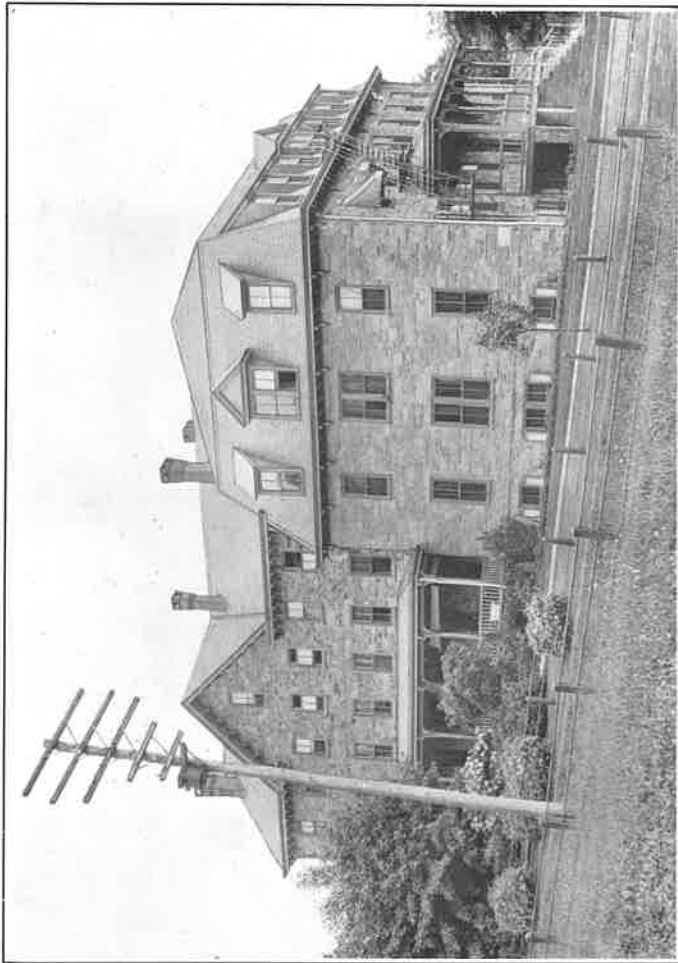
School Committee

Officers

NATHAN B. GASKILL, President.....Jenkintown, Pa.  
CYNTHIA G. BOSLER, Secretary.....Ogontz, Pa.  
MARSHALL P. SULLIVAN, Vice-President.....Ogontz, Pa.  
EDWIN STAPLER, Treasurer.....Abington, Pa.

Members

MARY ANNA HALLOWELL.....Bethayres, Pa.  
ELIZABETH W. HEACOCK.....Wyncote, Pa.  
C. COMLY SMITH.....Jenkintown, Pa.  
PENROSE HALLOWELL.....Meadowbrook, Pa.  
ANNIE M. JARRETT.....Fox Chase, Phila., Pa.  
CLARA GASKILL TURNER.....Jenkintown, Pa.  
ELIZABETH THOMSON TAYLOR.....Ogontz, Pa.  
DAVIS L. LEWIS.....Ogontz, Pa.  
ELIZABETH J. CULEN.....Ogontz, Pa.



SCHOOL BUILDING

### The Faculty

1913-1914

- DUDLEY C. BARRUS, PH.B. (Keuka College, N. Y.)  
RACHEL S. MARTIN (West Chester State Normal School)  
Principal of Primary
- LILLIAN M. KELLOGG (Bloomsburgh State Normal School)  
Assistant in Primary and Intermediate
- VIRGINIA BROWN (Graduate Leefson-Hille Conservatory)  
Music
- HOWELL K. SMITH, A. B. (Dickinson, Western Maryland  
Colleges.)  
Science, Higher Mathematics, Manual Training
- 
- Science, Mathematics.
- MAY E. STEVENSON (Graduate School of Industrial Art)  
Drawing
- MABEL BERGERSON  
Latin, English, German
- ANNA WORRELL, A.B. (Swarthmore College)  
Intermediate Classes English and German
- EDITH M. ROSE  
Singing
- S. EMMA HUGHES, Matron.
- ARABELLA BULLOCK, Housekeeper.
- DR. SUMNER H. CROSS, Physician in Charge.

\* Appointment not yet made.

## Abington Friends' School

### ORIGIN AND DESIGN

The institution was established by Friends early in the eighteenth century as a day school. In 1886 a new building was erected and a boarding department was added. Later an addition was built to accommodate the increasing number of students.

The School is under the care of a committee appointed by Abington Monthly Meeting of Friends. It was founded for the purpose of furnishing a thorough and guarded education at a moderate cost. The aim of the officers and instructors is to promote the moral as well as the intellectual welfare of the pupils.

### LOCATION

The School is located near the borough of Jenkintown in the beautiful rolling country that lies directly north of Philadelphia. The district is high and healthful, entirely free from any danger of malaria.

Jenkintown station is at the junction of the North Penn and Bound Brook Railroads, about ten miles from the Reading Terminal at Twelfth and Market Streets, Philadelphia, and eighty miles from New York.

The Willow Grove trolley cars, which run out Eighth and Thirteenth Streets, pass about one-fourth of a mile from the School.

### BUILDINGS

The main building is of stone, substantial, comfortable, well lighted and ventilated, and heated by hot



A PART OF THE GIRLS GROUNDS

water. The ground floor is entirely taken up with school-rooms, classrooms, office, reception room, laboratory and gymnasium. The second and third stories are taken up mainly with rooms for students and teachers. The halls and rooms are comfortably heated and furnished, lighted by electricity, and the bedrooms are supplied with good spring beds, wash stands, bureaus, rugs and other articles necessary to comfort. There is a large bathroom on each hall. The apartments for the boys and girls are in separate wings of the building. The number of resident students is limited to fifty-six, half of either sex.

In the basement are the kitchen, dining room, dressing rooms and lunch rooms for the accommodation of day pupils. Three piazzas and the gymnasium furnish abundant space for exercise during the inclement weather.

An entirely separate building in the rear of the main school building contains the servants' rooms.

### GROUND S

The School buildings are situated on a triangular plot of ground, which is partly covered with trees and shrubbery; the remaining open portion furnishes room for tennis, croquet and other games. Adjoining this are the athletic field and a beautiful grove of oak trees, of which the pupils make free use. In all, the School grounds comprise about ten acres.

### PRIMARY DEPARTMENT

The Primary Department occupies a pleasant room, conveniently furnished and suitable for its purpose. Besides the primary room, this department also uses the gymnasium and some of the classrooms. The work is under the direction of a principal and assistants, and the methods employed are those of the best primary schools. The discipline is firm, and care is taken to secure the proper physical as well as moral and intellectual development of the children.

### INTERMEDIATE AND ACADEMIC DEPARTMENT

The schoolrooms and classrooms occupied by the intermediate and higher grades are well heated and ventilated, furnished with neat and convenient furniture, lighted by electric lights and well equipped with maps, reference books and other apparatus necessary for a first-class academy. The work is under the charge of the principal and a corps of assistants.

### MATHEMATICS

The work begins with exercises in numbers in Class K, and is carefully planned for each grade in the entire School. Quickness and accuracy in making computations is the chief feature of the work in Arithmetic; in the upper grades, careful and painstaking analysis and clear and logical demonstrations are insisted upon. The work in Algebra, Geometry and Trigonometry is extended and thorough, and meets the entrance requirements of any American college.

The work in Mathematics is especially strong and fits students to pursue courses in Engineering or other scientific subjects in colleges or schools of technology.

### ENGLISH

The regular class drills in reading are supplemented by the use of selections from the best authors. A well-arranged course in Grammar forms an important part of the work in English up to Class D. The work of Class C comprises notes on American Literature and readings from American authors; similar work in English Literature is given in Classes A and B. These courses are so arranged as to include the books recommended for college entrance by the Association of Colleges and Preparatory Schools of the Middle States and Maryland. A course in Rhetoric forms a part of the work of this department.

Compositions are required of all grades at regular intervals. The aim is to cultivate facility of expression. Correctness of form, spelling and punctuation, neatness of penmanship and public speaking, etc., are insisted upon.

### SCIENCE

The course in Science embraces the elements of Botany, Physiology, Physics and Chemistry. While the textbooks are placed in the hands of the students, much supplementary instruction is given. The object throughout is to encourage the spirit of inquiry and investigation.

Material for examination is supplied for the work in Natural Science; and apparatus for experiments in Physics and Chemistry is accessible.

Laboratory work in Chemistry and Physics is an important feature of the course in Science.

### HISTORY AND GEOGRAPHY

Political Geography continues for three years after the pupil passes from the Primary to the Intermediate Department; and after its completion a course in Physical and Commercial Geography is given.

The work in History runs through every grade except two, and includes American, English, General and Ancient History. Class A spends a part of the year in the study of Civil Government.

### LANGUAGES

The course in German, which starts in Class D and extends through four years, begins with easy sight reading. After a fairly good vocabulary is acquired, the common inflections are taught. This is followed by a thorough study of grammar and composition and the reading of German classics. The work is conducted in the most approved manner, and considerable fluency in the use of the language is acquired.

Classes in French are formed for those pupils who desire to take it, when there are sufficient numbers, and at an extra individual charge of twenty dollars for each year's instruction.

Latin begins in Class D and continues for four years. The instruction given covers the usual amount of work in grammar, composition and translation required for college entrance.

### ART WORK AND MANUAL TRAINING

The aim of this course is to develop the pupil's powers of observation, creation and expression; to cultivate the taste and develop an appreciation and love for the beautiful; and finally, to make some practical use of the training acquired.



A MUSIC ROOM

The course includes: (1) Constructive Drawing, the basis of all industrial pursuits; (2) Wood Work, so designed as to have each exercise result in some useful object; (3) Pictorial Drawing, enabling the pupil to express interesting and familiar objects in different mediums; (4) Decorative Drawing, so arranged as to have pupils make a practical application of their studies. Oil Painting and Water Color Painting are skillfully taught to those desiring them.

#### BOOKKEEPING

A course in Business Practice and Bookkeeping is given when a sufficient number of students desire this work.

#### PIANO

The training in instrumental music is in line with the best modern methods of teaching, while the careful drill in harmony and in the theory as well as the practice of music tends to develop the entire musical ability of the student. Special attention is given to the formation of a correct touch, Mason's System of Technics and the Virgil Clavier Method being employed for this purpose. All pupils are required to use the Maelzel Metronome with bell attachment. The National Graded Course and various études are taught throughout the course in connection with the works of Bach, Beethoven, Czerny, Concone, Hoffmann, Clementi, and selections from the best classic composers. Practice in sight reading is required, and an opportunity for ensemble playing is given to those sufficiently advanced.

Classes in Harmony and Theory will be formed for pupils desirous of obtaining a thorough and well-rounded knowledge of Music.

#### Physical Exercise

To the student who is necessarily confined so much of the time indoors, open-air exercise is most beneficial. Hence the resident pupils of the School are required to take outdoor exercise. Gymnastic drills are given in the gymnasium under competent instructors, and the gymnasium is open at other times for the recreation of the students.

Encouragement is given to Athletics so long as they do not interfere with school work. The instructors mingle with the pupils on the athletic field; it is here that they find the best opportunity to influence personally the characters of the students.

The athletic sports that arouse the chief interest among students are football, basketball, baseball and tennis. The School, when its size is taken into consideration, is strong in this department. Basketball and tennis are participated in by the girls as enthusiastically as by the boys, and much advantage is derived from these games.

#### Library

A carefully selected collection of books constitutes the Library. The number of volumes at present is about nine hundred, and additions are being made from time to time.

Current numbers of a carefully selected list of periodicals are kept for the use of the students.

#### Scholarship

An honorary scholarship of the value of \$150 for a resident or \$75 for a non-resident student is offered by Swarthmore College to a member of the graduating class of 1913.

### General Remarks

Lectures and other entertainments are given each year in the Assembly Room of the School.

An excellent course of lectures is also given in the hall in Jenkintown, which the students are encouraged to attend.

The Alumni Association of the School offers an annual prize to the class producing the best oration for the year.

This work, besides occasional entertainments and debates, does much to train the students in public speaking.

The best care is taken in all cases of sickness, and if at all serious, parents are promptly notified.

A report of each pupil's work is sent home at regular intervals. Parents desiring further information than the report contains can obtain it by visiting the School or corresponding with the Principal.

### Regulations

Pupils must conduct themselves as they would in a well-regulated home. Regular and prompt attendance is absolutely necessary.

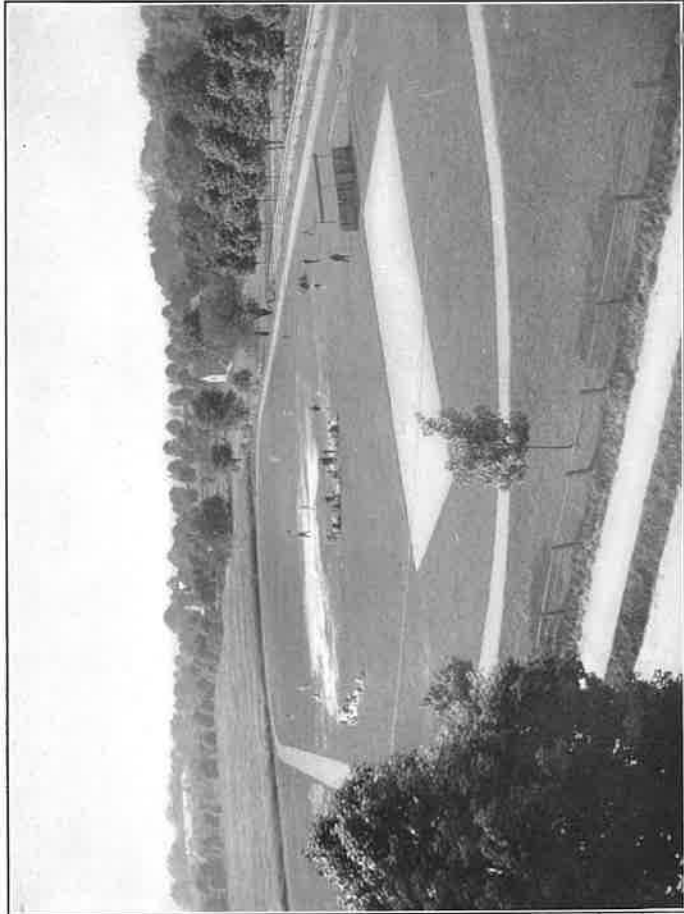
Resident pupils are required to attend Friends' Meeting on First-days with their teachers.

Pupils who are sick must have themselves reported to the Matron.

No pupil may be absent from the dining room at meal time without having been previously excused.

The use of alcoholic drinks or tobacco in any form is prohibited.

Every pupil is responsible to every officer of the School for satisfactory conduct.



THE ATHLETIC FIELD



Objectionable books, papers, cards or other articles of a dangerous or harmful nature will be taken and destroyed.

No pupil may enter another's room without the occupant's permission.

The occupants of a room are responsible for it and the furniture while in their possession.

Pupils are held responsible for any abuse of building, furniture or books.

Such reasonable regulations as are necessary to the order and well-being of the School are made and enforced, and pupils refusing to submit to these, or those who in conduct or conversation exert a bad influence upon the School, cannot be allowed to enjoy its privileges.

Pupils are not permitted to leave the School to visit home or elsewhere without a request from parent or guardian. These requests should be sent directly to the Principal early enough to allow him to communicate with the parent if deemed advisable. The absences should not occur except upon the Seventh or First days of the week.

Pupils should arrive at the School both at the opening of the term and at the close of the holidays on the day designated in the calendar. This is important, for regular school work begins on the day and hour designated, and any delay in the arrival of a pupil is often of much disadvantage to him.

Wearing apparel should not be extravagant or expensive.

Resident pupils must be supplied with necessary toilet articles, napkins, towels and two laundry bags.

Each article of clothing must be plainly marked with the owner's name.

**Admission**

Pupils of both sexes and of any religious denomination are admitted.

Day pupils are received at the age of six years or over.

Pupils are admitted only for the school year, or for such part of the school year as remains after entrance. The school year is not divided into terms.

Any applicant for admission who is not known to a member of the School Committee or of the Faculty must furnish a satisfactory testimonial of character from the last school attended or from some other reliable source.

Application for admission should be made to the Principal or some member of the School Committee at as early a date as possible.

**Endowment**

Owing to an endowment which produces a regular annual income, the School, in order to meet its running expenses, is enabled to fix lower rates for board and tuition than other institutions of like character.

**Charges for the School Year**

**DAY STUDENTS**

High School .....	\$85.00
Intermediate Department .....	75.00
Primary Department .....	60.00

**RESIDENT STUDENTS**

High School .....	\$325.00
Intermediate Department .....	315.00
Primary Department .....	300.00

**EXTRAS**

Music Lessons (Piano).....	\$40.00
Use of Piano for Practice.....	10.00
French Lessons .....	20.00

A limited number of girls may be assigned to single rooms if desired at a charge of \$375 for the school year.

Resident pupils who return home for Seventh-days and First-days and do not have their laundry work done at the School, are allowed a reduction of \$20 from the charge for board for the school year.

Pupils admitted after the first month of school are charged at proportionate rates for the remainder of the school year.

No deduction will be made for absence or withdrawal except in case of personal sickness for three or more consecutive weeks, when the loss will be shared, it being understood that such deduction is made only from the amount due for the entire school year.

If a pupil is expelled no claim for rebate can be allowed.

Medical attendance and medicines are at the expense of the students. In case of sickness, prolonged, serious or contagious, a nurse must be supplied at the expense of the patron.

Students who are ill should be removed to their homes, whenever possible, until they are able to resume their duties, thus saving inconvenience, anxiety and expense to parents.

The weekly allowance for laundry is ten pieces. This may include one simple dress or two shirtwaists or two shirts. A charge is made for white skirts or for any garment elaborately trimmed.



A GROUP OF STUDENTS

Textbooks will be furnished to the students at or below usual city prices.

A stationery counter is kept at which pupils can purchase such books and stationery as are needed for school use. In order to open accounts at the stationery counter, students are required to make a deposit of \$5 to cover probable purchases.

Students pursuing courses in Drawing and Science in the upper grades and those taking Manual Training are subject to slight charges for materials used.

Dinners will be furnished to day pupils, when desired, at a regular charge of 25 cents each, payable weekly. Light lunches may be provided at a nominal price.

A charge of 25 cents will be made to visitors, except the parents of the pupils, for each meal taken at the School and for each night's lodging.

If it should become necessary to turn a bill over to a collector or to secure payment after notice has been given, ten per cent. will be added to pay expenses of collection.

Bills are payable to the Principal in two equal instalments, the first being due at the opening of the School in Ninth Month, and the second on First Month 5th, 1914.

## Courses of Study

---

Beginning with Class K in the Primary Department, the course of study leads year by year to graduation. The course has been arranged to meet the entrance requirements of the leading colleges and universities, though the work required for graduation is broader than these entrance requirements demand.

The course of study which follows is substantially as given in the School, though minor charges are made from time to time.

### Primary Department

#### CLASS K

**Number Work.**—Counting and simple combinations.

**Reading, Writing, Spelling.**—Memorizing short selections.

**Nature Study.**—Common plants, animals and minerals and simple lessons in hygiene.

**Stories** told or read to the children.

**Drawing, Clay Modeling, Kindergarten Exercises, Calisthenics.**

CLASS J

**Number Work.**—Combination to 100; fractional parts and use of common weights and measures.

**Reading, Writing, Spelling.**—Memorizing short selections of prose and poetry continued.

**Nature Study.**—Plant and animal life. Elementary ideas of geography. Simple hygiene.

Stories bearing upon history and allied subjects.

Drawing, Clay Modeling, Kindergarten Exercises, Calisthenics.

CLASS I

**Arithmetic.**—Fundamental rules including long division. Federal money, weights and measures.

Reading, Spelling, Dictation, Penmanship.

Science and Nature Study, Geography.

Stories bearing upon history and allied subjects.

Drawing, Clay Modeling, Calisthenics.

CLASS H

**Arithmetic.**—Easy fractions. Denominate and compound numbers.

Reading, Spelling, Language Lessons, Penmanship.

Geography, Nature Study.

History.—Stories from European and American history.

Drawing, Clay Modeling, Calisthenics.



BASEBALL TEAM

### Intermediate Grades

#### CLASS G

Arithmetic.—The four fundamental processes applied to whole numbers, common fractions and decimals.

Reading.—Fourth Readers and supplementary reading.

Spelling, Grammar, Composition, Penmanship.

Science.—Geography, Nature Study.

History.—United States.

Drawing, Clay Modeling, Gymnasium Work.

#### CLASS F

Arithmetic.—Review of common fractions and decimals. Denominate numbers, percentage.

Reading, Spelling, Grammar, Composition, Penmanship.

Science.—Geography, Nature Study.

History.—United States.

Drawing, Clay Modeling, Gymnasium Work.

#### CLASS E

Arithmetic.—Measurements, percentage.

Reading, Spelling, Grammar, Composition, Penmanship.

Science.—Physiology, Geography.

History in connection with selections for reading.

Drawing, Manual Training, Gymnasium Work.

### The High School

The course of study in the High School leads directly to college or technical school. There is sufficient choice allowed to permit the student to prepare for admission to classical, literary or scientific courses.

The course is also extended enough to give a broad and thoroughly useful education to such as end their school days with the high school. Those who pursue the course regularly through the four years will find the arrangement of subjects as given under the different classes the most convenient and satisfactory. The numbers refer to the number of "credits" granted for the successful completion of the course.

#### CLASS D

Reading and Literature, 3.—Reading of works of American and British authors.

Composition and Grammar, 4.—Theme writing, Oral composition, Grammar.

Algebra, 4.—Beginners' Algebra through fractional equations. Review of Arithmetic.

Latin, 5.—Lessons and reading.

Science, 3.—Physical Geography, Botany.

History, 3.—Ancient.

Drawing and Manual Training, 2. Gymnasium, 1.—The course in German will begin during the year.

#### CLASS C

Reading and Literature, 3.—American Literature, college entrance readings.

Composition and Rhetoric, 4.—Theme writing.

**CLASS C—Continued**

- Algebra, 4.**—Review and advanced work through quadratic equations.
- Latin, 5.**—Grammar. Cæsar's Gallic War, four books or other equivalent reading.
- German, 4.**—Grammar, stories and poems.
- French** may be substituted for German or Latin.
- Physics, 3.**—Laboratory work and textbook.
- Drawing and Manual Training, 2.**—(Optional Courses.)
- Gymnasium, 1.**

**CLASS B**

- Reading and Literature, 4.**—English Literature. College entrance readings.
- Composition and Rhetoric, 2.**
- Algebra, 3.**—Review and advance to Permutations.
- Geometry, 4.**—Plane Geometry.
- Latin, 5.**—Æneid Books, 1-4. Prose Composition.
- German, 4.**—Grammar. Selections from Sturm, Heyse, Andersen and others.
- French or Greek** may be substituted for Latin or German.
- Physics, 3.**—Review and advance, including electricity.
- History, 3.**—United States. Civics.
- Art Work, 2.**—(Optional.) Gymnasium.

NOTE.—A and B Reading and Literature, Science and History are given alternate years, the two classes working together in these subjects.

**CLASS A**

- Reading and Literature, 4.**—English Literature. College entrance readings.
- Composition and Rhetoric, 2.**
- Algebra and Arithmetic, 3.**—Reviewed.
- Geometry, 5.**—Solid Geometry and Trigonometry.
- Latin, 5.**—Virgil's Æneid, Books 5, 6. Cicero's Orations. In Catilinam 4 with three others. Prose Composition.
- German, 4.**—Grammar, composition. Readings from Schiller, Lessing, Goethe. Sight reading.
- French or Greek** may be substituted for Latin or German.
- Chemistry, 3.**—Laboratory work. Analysis.
- History, 3.**—United States. Civics.
- Art Work, 2.**—(Optional.) Gymnasium.

NOTE.—Students taking the maximum amount of science work, art work and mathematics during the A, B and C years may omit one language. Students desiring to enter college or technical school should take work with that end in view through the A, B and C years. A course in Bookkeeping and Business Arithmetic is given when a sufficient number desire it. The minimum requirement for graduation is 96 high school "credits."

Further information regarding the School and its work may be obtained by addressing

DUDLEY C. BARRUS, PH.B., Principal,  
Jenkintown, Pa.

Names of Students, 1912-1913

High School

CLASS A

- ✓ Aloysius F. Barili.....Hartsville, Pa.
- Edith M. Brooks.....Columbia, Pa.
- ✓ E. Gladys Johnston.....Roslyn, Pa.
- Joseph A. Ortiz.....Santiago, Cuba.
- ✓ Louis M. Robb.....205 N. 36th St., Phila, Pa.
- ✓ Robert R. Robb.....205 N. 36th St., Phila, Pa.
- Arthur Webster .....Steelton, Pa.

CLASS B

- Dorothy V. Baker.....1234 Pacific St., Brooklyn,  
N. Y.
- Charles M. Bartlett.....Easton, Md.
- ✓ Geraldine S. Tyson.....Wyncote, Pa.
- ✓ Natalie S. Tyson.....Wyncote, Pa.
- V. Ruth Weir.....Jenkintown, Pa.

CLASS C

- Florence Doolittle .....Oberlin, Ohio.
- Leslie P. Gestefeld.....Bristol, Pa.
- Ramon Gonzales .....Matanzas, Cuba.
- Joseph Hallowell .....Ivyland, Pa.
- ✓ Charles F. Kindt, Jr.....Jenkintown, Pa.
- Sutherland Palmer .....St. George, Staten Island,  
N. Y.
- ✓ Katharine Wood .....Ridgeway, Pa.

CLASS D

- ✓ Horace G. Alleman.....Jenkintown, Pa.
- Laura Evans .....620 Adelaide St., Newark,  
N. J.
- Frank M. Flanders.....Noble, Ill.
- Marjorie P. Fogh.....Seattle, Wash.
- Elizabeth L. S. Fretz.....Jenkintown, Pa.
- Harold Lyster .....Thorofare, N. J.
- Charles K. Morton.....Lewes, Del.
- ✓ Leonard G. Needles.....Elkins Park, Pa.
- Evelyn Tyson .....Wyncote, Pa.

Intermediate Department

CLASS E

- Elizabeth L. Barker.....Jenkintown, Pa.
- William Chapman .....1900 N. 13th St., Phila., Pa.
- Emma D. Evans.....620 Adelaide St., Newark,  
N. J.
- ✓ Walter W. Hagy.....1608 Allegheny Ave., Phila,  
Pa.
- Charles Jarrett .....Fox Chase, Phila., Pa.
- Florence Ostrow .....902 Shallcross Ave., Wil-  
mington, Del.
- ✓ Carolyn A. Price.....5904 Wayne Ave., German-  
town, Pa.
- ✓ Eleanor Shoemaker .....Jenkintown, Pa.
- ✓ Richard E. Stenger.....Jenkintown, Pa.
- ✓ Nathan S. Trump.....Jenkintown, Pa.

CLASS F

- Armand Fernandez.....Santiago, Cuba.
- Emily H. Fretz.....Jenkintown, Pa.
- Frank H. Fretz.....Jenkintown, Pa.

ABINGTON FRIENDS' SCHOOL

- ✓ Miriam J. Gilbert.....Jenkintown, Pa.  
 ✓ Thomas P. Harper, Jr.....Jenkintown, Pa.  
 Ernest A. R. Hosbach.....821 Cherry St., Phila., Pa.  
 Eugene D. O'Reilly.....373 Gates Ave., Brooklyn,  
 N. Y.  
 Sadie Ostrow .....902 Shallcross Ave., Wil-  
 mington, Del.  
 William T. Taylor.....Ogontz, Pa.  
 Elizabeth W. Turner.....Jenkintown, Pa.  
 Mary S. Tyson.....Wyncote, Pa.  
 J Eunice C. Weed.....Hatboro, Pa.

CLASS G

- Thomas Bethencourt.....Glenside, Pa.  
 Fannie R. Carvin.....1438 N. 15th St., Phila., Pa.  
 G. Lloyd Comfort.....137 N. 50th St., Phila., Pa.  
 Frederick Cullingford.....515 Woodland Terrace,  
 Phila., Pa.  
 Raphael Gornez.....302 Walnut St., Phila., Pa.  
 Kenneth Gove.....731 E. 13th St., Brooklyn,  
 N. Y.  
 Edwin G. Hallowell.....Jenkintown, Pa.  
 Catharine Hartley .....1306 Master St., Phila., Pa.  
 Allen D. Joseph.....Lewes, Del.  
 Lawrence B. Lewis.....Ogontz, Pa.  
 J Donald E. Moyer.....Willow Grove, Pa.  
 R. Elizabeth Oldes.....Latches Lane, Merion, Pa.  
 L. Dorothy Price.....5904 Wayne Ave., German-  
 town, Pa.  
 Raymond W. Strohl.....2320 N. Broad St., Phila.,  
 Pa.  
 Thomas Tyson.....Wyncote, Pa.  
 Esther Vrooman.....Jenkintown, Pa.  
 Francis Zincke .....1820 Arch St., Phila., Pa.

ABINGTON FRIENDS' SCHOOL

Primary Department

CLASS H

- Dorothy F. Abrams.....1632 Mt. Vernon St., Phila.,  
 Pa.  
 Lothaire M. Abrams.....1632 Mt. Vernon St., Phila.,  
 Pa.  
 Helen H. F. Carr.....221 E. 6th St., Plainfield,  
 N. J.  
 Randall W. Dickinson.....Norfolk, Virginia.  
 George R. Hargesheimer.....Willow Grove, Pa.  
 Richard H. Hano.....1213 Stratford Ave., Melrose  
 Park, Pa.  
 Netta Hess .....4th and Market Sts., Phila.,  
 Pa.  
 Isaac M. Jarrett.....Fox Chase, Pa.  
 Allen S. Lyster.....1414 N. 13th St., Phila., Pa.  
 Joseph F. Paul.....Huntingdon Valley, Pa.  
 Marie F. Robb.....205 N. 36th St., Phila., Pa.  
 Thomas T. Taylor.....Ogontz, Pa.  
 Howard W. Taylor.....227 Washington Lane, Jen-  
 kintown, Pa.  
 Townsend Tyson.....Wyncote, Pa.  
 Margarite Wainwright .....3134 Montgomery Ave.,  
 Phila., Pa.

CLASS I

- Benjamin L. Bowden.....265 Mather Ave., Jenkin-  
 town, Pa.  
 Edward T. H. Bushnell....5148 Wayne Ave., German-  
 town, Pa.  
 Nathan B. Gaskill.....Jenkintown, Pa.  
 Stroud M. Hamilton.....6020 Greene St., German-  
 town, Pa.



Milton S. Hess.....4th and Market Sts., Phila., Pa.  
 Alexander J. Heller.....2032 N. Front St., Phila., Pa.  
 Marion E. Logan.....Jenkintown, Pa.  
 Margaret E. Way.....321 Cottman St., Jenkin- town, Pa.

**CLASS J**

Melosina D. Barker.....509 York Road, Jenkintown, Pa.  
 Lester R. Hano.....1213 Stratford Ave., Melrose Park, Pa.  
 John M. Kellogg.....30 N. Main St., Pittston, Pa.  
 Wm. Clark Stevenson.....6912 Ridge Road, Roxbor- ough, Pa.  
 Mary T. Sullivan.....Ogontz, Pa.  
 Theodore C. Taylor.....227 Washington Lane, Jen- kintown, Pa.  
 Harriet H. Tyson.....Wyncote, Pa.  
 Justice H. Williams.....Jenkintown, Pa.

**CLASS K**

Harry C. Aberle.....Lenox Road, Jenkintown, Pa.  
 Samuel H. High.....Jenkintown, Pa.

**Alumni**

**Officers of Alumni Association**

WILLIAM D. RIDGWAY, President.....Cheriton, Va.  
 PAUL M. BROOK, 1st Vice President.....Enfield, Pa.  
 GEORGE B. HALLOWELL, 2d Vice President...Bethayres, Pa.  
 ELIZABETH B. HENDRICKSON, Secretary....Jenkintown, Pa.  
 EDWARD H. PARRY, Treasurer.....Wyncote, Pa.  
 MARIAN D. HALLOWELL, Recorder,  
 69th and Lawnton Ave., Oak Lane, Pa.

**CLASS OF 1890**

Clarence M. Buckman.....Deceased.  
 M. Ella Buckman.....Hatboro, Pa.  
 Abbott Satterthwait, M.D...Centreville, Cal.  
 Eliza (Stewart) Engart...Hartsville, Pa.  
 Emily (Stewart) Liggett...Coatesville, Pa.  
 Henry C. Turner, B.S., C.E..26 Garden Place, Brooklyn, N. Y.  
 Anna Wildman .....1639 Race St., Phila., Pa.

**CLASS OF 1891**

Caroline (Bosler) Lewis....Ogontz, Pa.  
 Sara (Jarrett) Hilles.....19 Jacoby St., Norristown, Pa.  
 Russell T. James.....Deceased.  
 Edith (Williams) Cox.....Jenkintown, Pa.  
 Margaret (Stewart) Dow-  
 lin .....Downingtown, Pa.  
 Katharine P. Tuttle.....Speonk, N. Y.  
 Anna Russell, A.B.....New Market, Md.

ABINGTON FRIENDS' SCHOOL

CLASS OF 1892

Howard E. Barker.....Deceased.  
Helen DeCou, A.B.....Moorestown, N. J.  
Robert C. Woodman, M.D..Middletown, N. Y.  
Elizabeth Woodward .....Beaumont, Texas.

CLASS OF 1893

M. Katherine Leland.....Collingswood, N. J.  
A. Lucile (Levick) Deemer.Aguas Calientes, Mexico.  
Etta (Stewart) Smith.....Swarthmore, Pa.  
J. Russell Smith, Ph.D.....Swarthmore, Pa.  
Levi S. Taylor, Ph.D.....Pasadena, Cal.

CLASS OF 1894

Susan W. Atkinson.....Holicong, Pa.  
Clara H. (Gaskill) Turner..Jenkintown, Pa.  
Frank S. Gentry, LL.B.....Jenkintown, Pa.  
Arthur L. Harris.....Coleman, Kent Co., Md.  
Eliza S. (Williams) Smith..Stockton, N. J.

CLASS OF 1895

Harry S. Ambler, LL.B.....Abington, Pa.  
Chas. W. Bosler, B.S., C.E..Ogontz, Pa.  
Alice K. Gourley.....Atlantic City, N. J.  
Sara S. (Haines) Fell.....Delmar, Germantown, Pa.  
Arthur C. Smedley, B.S.....Cheyney, Pa.  
Elizabeth H. (Smith) Fet-  
ter .....Jenkintown, Pa.

CLASS OF 1896

Albert H. Coggins, LL.B...5025 McKean Ave., German-  
town, Phila., Pa.  
James Crowe, M.D.....Bethayres, Pa.

ABINGTON FRIENDS' SCHOOL

Mary R. Noe.....830 Windsor Square, Phila.,  
Pa.  
Martha Hallowell .....Meadowbrook, Pa.  
John K. Harper.....Baltimore, Md.

CLASS OF 1897

Jane T. (Hallowell) Har-  
vey .....Bethayres, Pa.  
Mary P. (Harper) Parry...Oak Lane, Phila., Pa.  
Louise P. (Jackson) Mac-  
Leod .....706 2d Ave., Detroit, Mich.  
Theodore G. Walton.....910 Sarah St., Homestead,  
Pa.  
Anna T. (Jarrett) Penrose..Phoenixville, Pa.  
M. Adele Quigley, D.D.S...Fox Chase, Pa.  
Alice P. (Thomson) Sulli-  
van .....Ogontz, Pa.

CLASS OF 1898

Florence (Druckenmiller)  
Van Tobel .....Bookings, S. D.  
Marian E. (Dyer) Hallo-  
well .....69th and Lawton Ave., Oak  
Lane, Pa.  
John R. Dyer.....Yardley, Pa.  
Emilie S. Goodwin.....Jenkintown, Pa.  
Herbert E. Jenks.....Jenkintown, Pa.  
Annie L. (Michener) Longs-  
dorf .....Jenkintown, Pa.  
Caroline Thomson .....“Frontenac,” Phila., Pa.  
Bertha C. (Weaver) Blood.6337 Greene St., German-  
town, Pa.

ABINGTON FRIENDS' SCHOOL

CLASS OF 1899

Byron Beans, B.S.....London, Eng.  
 Arthur M. Dewees.....Park Ave. and Lorraine St.,  
 Baltimore, Md.  
 S. Malvina (Dubree) Wood.Jenkintown, Pa.  
 J. Horace Ervien, B.S., C.E..Wyncote, Pa.  
 Marie E. Jarrett.....Davis Grove, Pa.  
 Anna L. (Smedley) Bar-  
 tram .....White Horse, Pa.

CLASS OF 1900

Harold I. Comly.....Los Angeles, Cal.  
 Elizabeth R. (Cox) Haines.Malvern, Pa.  
 Lydia C. (Folwell) Dexter.Mullica Hill, N. J.  
 Edith S. (Hensen) Rennin-  
 ger .....Glenside, Pa.  
 Benjamin K. Kirk.....Dresher, Pa.  
 Joseph Kirk .....Dresher, Pa.  
 Lillian E. (Rieg) Ashmead.1121 Prospect Ave., Kansas  
 City, Mo.  
 Agnes H. Sibbald.....Fox Chase, Phila., Pa.  
 Mabel R. (Stringer) Mac-  
 Gamwell .....Buffalo, N. Y.  
 William P. Webster.....Abington, Pa.

CLASS OF 1901

Walter Beans .....2530 Albion St., Denver, Col.  
 Lester C. Bosler, B.S., C.E..Ogontz, Pa.  
 Seybert D. F. Stringer.....Jenkintown, Pa.  
 J. Archer Turner, B.S., C.E..Swarthmore, Pa.  
 Frank D. Clifford.....Jenkintown, Pa.  
 Alice B. Griscom.....Salem, N. J.  
 Florence S. Weaver.....Fox Chase, Phila., Pa.  
 James Young .....Middletown, Pa.

ABINGTON FRIENDS' SCHOOL

CLASS OF 1902

Emma C. Comly.....Horsham, Pa.  
 Ethel B. (Davison) Kirk-  
 patrick .....Jamesburg, N. J.

CLASS OF 1903

Marian P. (Baker) Osmond.755 Aberdeen St., Phila., Pa.  
 Florence I. (Bryan) Gifford.Pasadena, Cal.  
 Esther L. (Miller) Cox.....Malvern, Pa.  
 Edith Hallowell .....Ivyland, Pa.  
 Morris Jarrett, Jr.....Horsham, Pa.  
 J. Carrell Morris.....1119 Silver St., Phila., Pa.  
 J. Carle Parry.....Jenkintown, Pa.  
 Anna W. (Quigley) Glad-  
 felter .....2249 N. Camac St., Phila., Pa.  
 John R. Roberts.....Jenkintown, Pa.  
 Horace E. Stapler, B.S.,  
 M.E. ....Newtown, Pa.  
 Donald W. Wilkie .....244 W. Clapier St., German-  
 town, Pa.

CLASS OF 1904

√ I. Eleanor Bernstein.....42d and Chester Ave., Phila.,  
 Pa.  
 Helen M. (Cox) Mac-  
 Gaughey .....261 Center St., Wallingford,  
 Conn.  
 √ Edgar J. Moore.....Willow Grove, Pa.  
 Anna T. Roberts.....Jenkintown, Pa.  
 E. Florence Stapler, A.B....Newtown, Pa.  
 Eleanor Weaver .....Fox Chase, Phila., Pa.

ABINGTON FRIENDS' SCHOOL

CLASS OF 1905

✓ T. Everett Kirk.....Dresher, Pa.  
✓ Elma E. Lippincott.....Kirkwood, N. J.  
Edythe Nicholson.....Jenkintown, Pa.  
Edward H. Parry.....Wyncote, Pa.  
Emma M. (Schwartz) Parry. Jenkintown, Pa.

CLASS OF 1906

Henrietta L. Dickensheets..420 Monmouth St., Gloucester, N. J.  
J. Frank Gaskill.....Jenkintown, Pa.  
Mary L. Hallowell.....Jenkintown, Pa.  
Esther L. (Pedcock) Potts.158 W. Hanover St., Trenton, N. J.

CLASS OF 1907

Chester W. Ambler.....Cheyney, Pa.  
Margaret V. Andersen.....Gloucester, N. J.  
Bessie Bew.....Swarthmore, Pa.  
Irene B. Chase.....Jenkintown, Pa.  
Elizabeth B. Hendrickson..Jenkintown, Pa.  
Williamina F. Loux.....Mechanicsville, Pa.  
Samuel L. Noble.....Fern Rock, Pa.  
Frances E. Robins.....Wyncote, Pa.

CLASS OF 1908

Sara M. Brooke.....Enfield, Pa.  
Hannah M. Comly.....Horsham, Pa.  
Viola M. Derr.....7th and Dauphin Sts., Phila., Pa.  
Harold Goodwin.....Jenkintown, Pa.  
Emma L. Hallowell.....Jenkintown, Pa.

ABINGTON FRIENDS' SCHOOL

George B. Hallowell.....Bethayres, Pa.  
Sarah W. Orvis.....Manchester, Vt.  
Edith A. Simons.....Oak Lane, Phila., Pa.

CLASS OF 1909

Paul M. Brooke.....Enfield, Pa.  
Beata V. Drake.....156 S. North Carolina Ave., Atlantic City, N. J.  
George R. Fitts.....McLean, N. Y.  
Margaret F. Hough.....Ambler, Pa.  
Tacy P. Hough.....Ambler, Pa.  
Martha M. Jarrett.....Fox Chase, Phila., Pa.

CLASS OF 1910

Marie I. Caldwell.....West Chester, Pa.  
Ethel R. Hamel.....Jenkintown, Pa.  
Clark A. R. Pearson.....1856 Willington St., Phila., Pa.  
William D. Ridgway.....314 S. 10th St., Phila., Pa.  
Anna P. K. Stapler.....Abington, Pa.  
J. Percy Weir.....Jenkintown, Pa.

CLASS OF 1911

Lilian S. Ambler.....Cheyney, Pa.  
Clifton L. Butler.....Beach Haven, N. J.  
Thomas J. Creator.....Hartsville, Pa.  
Alice E. Hallowell.....Bethayres, Pa.  
Carolyn Jarrett.....Fox Chase, Pa.  
Robert P. Marshall.....Jenkintown, Pa.  
Ellen J. Miller.....Hatboro, Pa.  
Clifford J. Noble.....Jenkintown, Pa.  
E. Rosalind Smith.....North Wales, Pa.